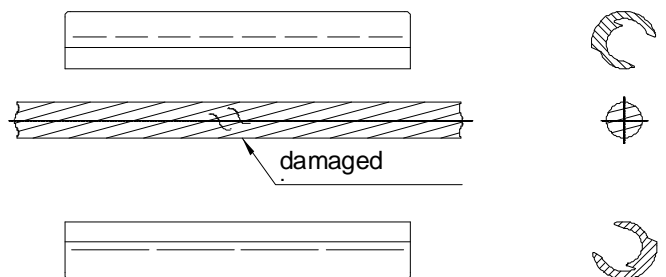


COMPRESSION REPAIR SLEEVE

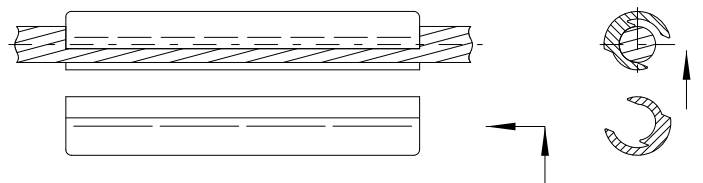
AI 037

1. The compression repair sleeves are only used in case that the number of damaged or broken strands is smaller or equal than one-third of the total number of strands in the outermost layer. In case of damaging or breaking more strands than indicated, it is necessary to use the compression midspan joint.

2. Damaged or broken aluminium strands need to be straightened and arranged according to their original state. The surface of thus formed conductor is to be cleared and greased.



3. Place one half of the compression repair sleeve at the centre of the damaged conductor portion and then carefully insert the other half of the repair sleeve laterally into the first part.



4. Press the repair sleeve starting from the centre of the sleeve toward its end.

